

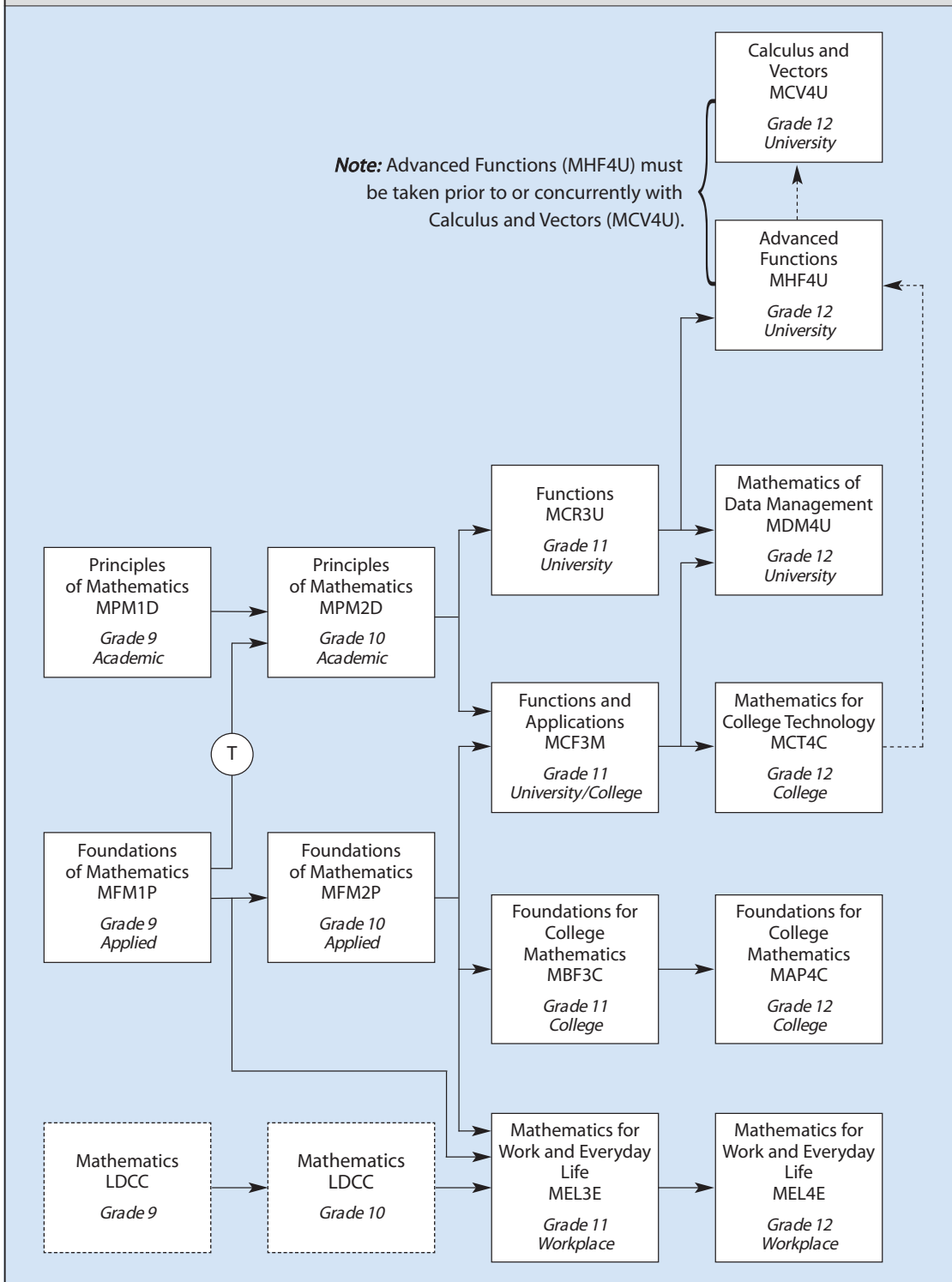
Math Program Planning

	Course Name and Code	Prerequisite	Course useful for:
Grade 11	Functions MCR 3U	Grade 10 Academic	University-bound students to areas needing MDM4U and MHF4U and/or MCV4U.
	Functions and Applications MCF 3M	Grade 10 Academic or Grade 10 Applied	University-bound students who need a single 4U math (MDM4U). College-bound students to technology areas (leading to MCT4C).
	Foundations for College MBF3C	Grade 10 Applied	College-bound students to non-technology areas who need a 3 rd math credit. University-bound students to the humanities and arts.
	Math for Everyday Life MEL3E	Grade 9 Applied or Grade 10 Applied	Students who need a 3 rd math credit
Grade 12	Data Management MDM4U	MCR3U or MCF3M	University-bound students entering into Social Sciences and business, or for strong math students wanting an elective credit.
	Advanced Functions MHF4U	MCR 3U or MCT4C	University-bound students entering a wide range of programs, including math, sciences, business, engineering, and others.
	Calculus and Vectors MCV4U	MHF4U must be taken before or concurrent with MCV4U	University-bound students entering math, science, engineering, business and some other programs.
	College Technology MCT 4C	MCF3M or MAP4C	Students entering College programs involving technology (e.g. engineering, computers, etc.). Students from MCF3M wanting to get to MHF4U.
	Foundations for College MAP4C	MCF3M or MBF3C	College-bound students who want a solid math foundation.

Post-secondary requirements vary between universities. For detailed information regarding admission requirements to all Ontario universities, go to <https://www.ontariouniversitiesinfo.ca>

Prerequisite Chart for Mathematics, Grades 9–12

This chart maps out all the courses in the discipline and shows the links between courses and the possible prerequisites for them. It does not attempt to depict all possible movements from course to course.



Notes:

- T – transfer course
- LDCC – locally developed compulsory credit course (LDCC courses are not outlined in this document.)